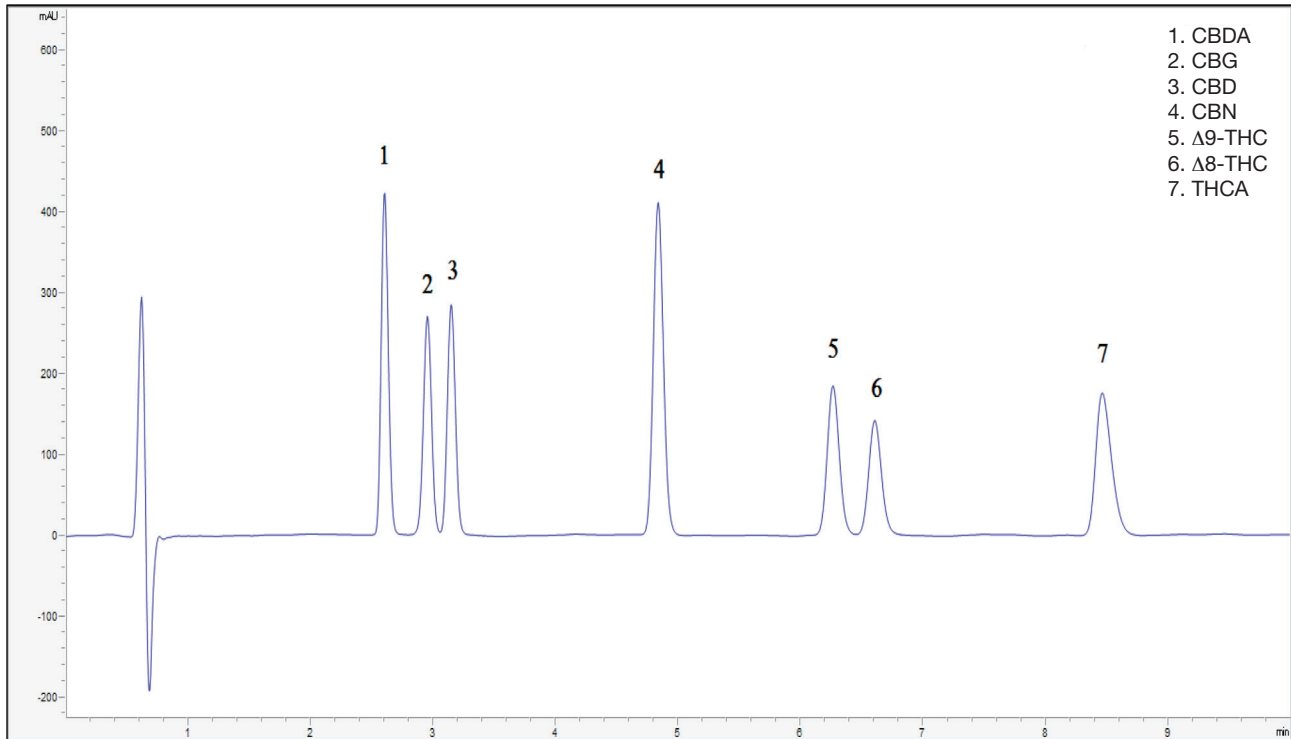


THC and Related Compounds*



* Application Data by courtesy YMC America, Inc.

Column: Meteoric Core C18, 2.7 μ m, 100 x 4.6 mm ID
Part No.: CAS08SQ7-1046PT
Eluent: water+formic acid (0.1%) / acetonitrile (27/73)
Flow rate: 1.25 ml/min
Detection: UV at 220 nm
Injection: 25 μ L (0.05 mg/mL)
Temperature: 35 $^{\circ}$ C