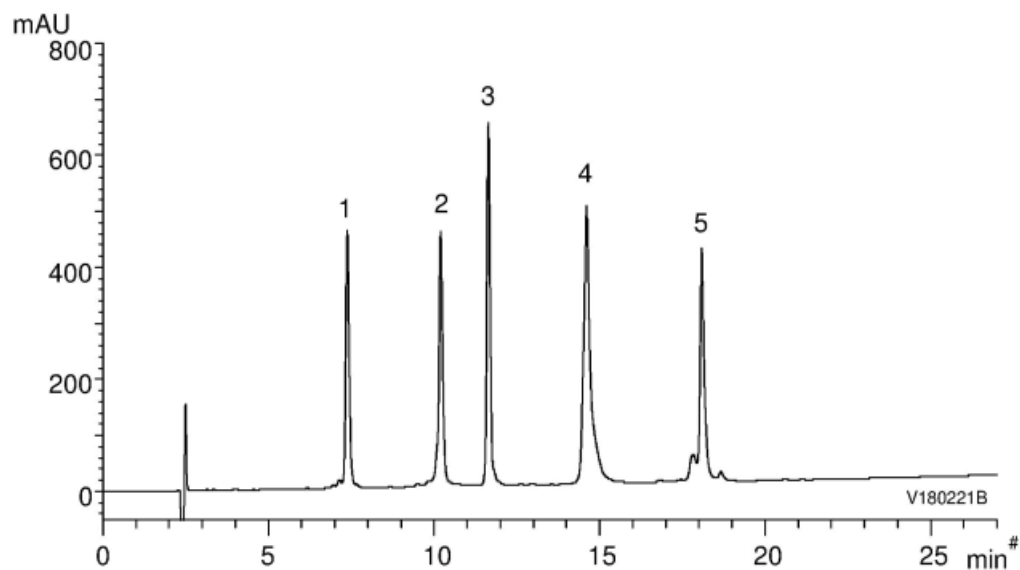


1. Ribonuclease A (Bovine pancreas) (MW 13,700)
2. Cytochrome c (Horse heart) (MW 12,400)
3. Insulin (Bovine pancreas) (MW 5,700)
4. BSA (MW 66,000)
5. α -Chymotrypsinogen A (Bovine pancreas) (MW 25,700)



Column : YMC-Triart Bio C4 (5 μ m, 30 nm)
150 X 3.0 mmI.D.

Eluent : A) water/TFA (100/0.1)
B) acetonitrile/TFA (100/0.1)
20-60%B (0-27 min), 90%B (27-35 min)

Flow rate : 0.4 mL/min

Temperature : 70°C

Detection : UV at 220 nm

Injection : 10 μ L (0.25 ~ 0.50 mg/mL)