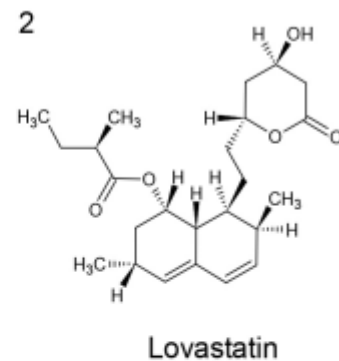
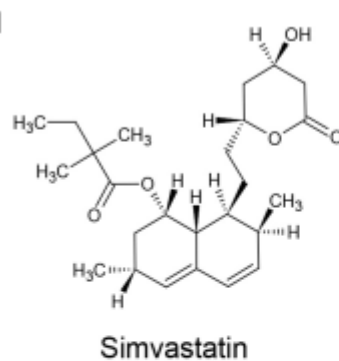
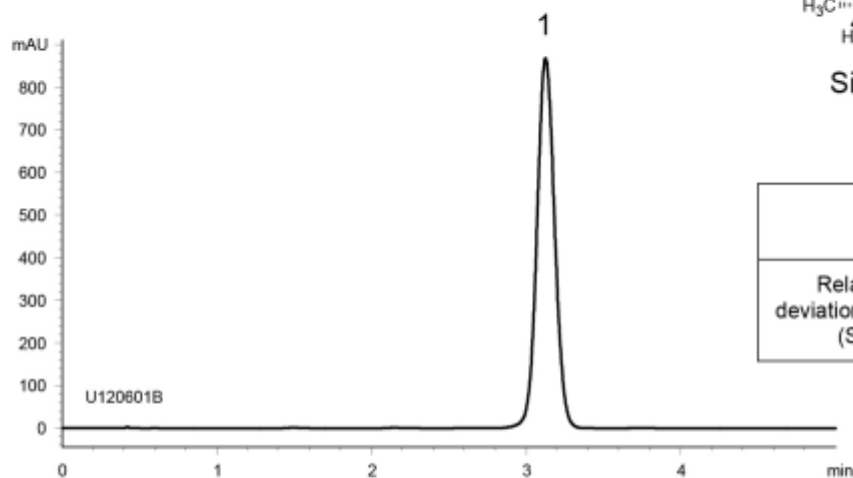
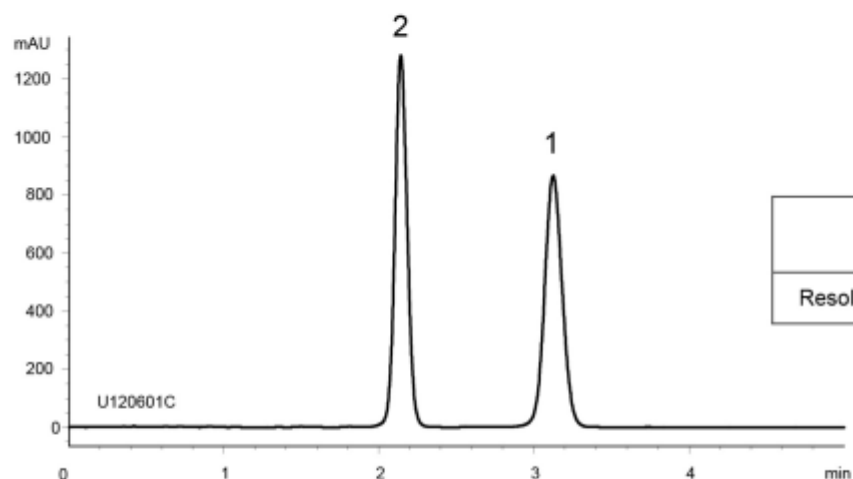


A) Standard solution\*  
(1.5 mg/mL Simvastatin)



	System suitability requirement	Result
Relative standard deviation of the peak area (Simvastatin)	$\leq 1.0\%$	0.44%

B) System suitability solution\*  
(1.5 mg/mL Lovastatin, 1.5 mg/mL Simvastatin)



	System suitability requirement	Result
Resolution (1, 2)	$\geq 3$	5.6

Column : YMC-Triart C18 (3  $\mu$ m, 12 nm)  
35 X 4.6 mm I.D.

Eluent : acetonitrile/water/phosphoric acid (50/50/0.05)

Flow rate : 3.0 mL/min (adjust the flow rate so that the retention time of simvastatin is about 3 min)

Temperature : 25°C

Detection : UV at 238 nm

Injection : 5  $\mu$ L

(The Japanese Pharmacopoeia 16th; Assay)

\* All solutions were prepared from Simvastatin supplied as a reagent for laboratory use.