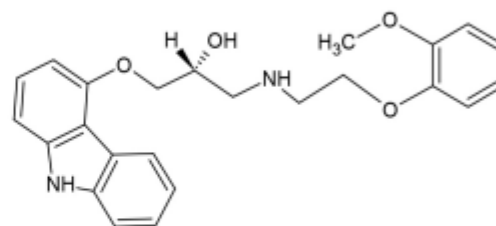
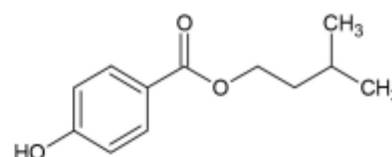
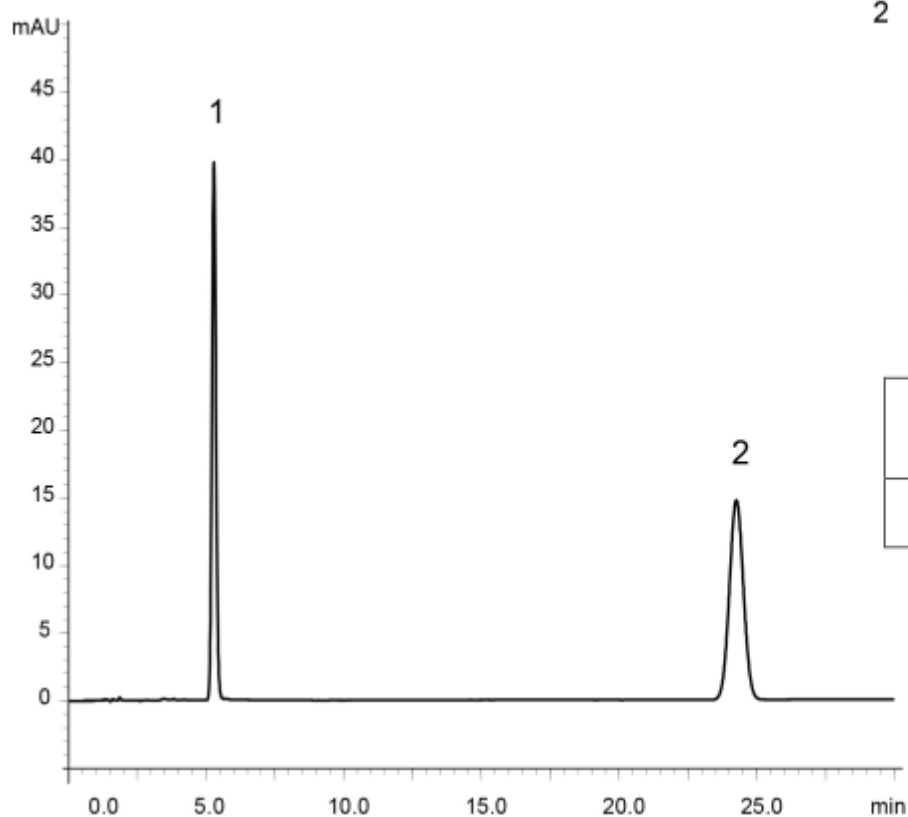


1



Carvedilol

2

Isoamyl *p*-hydroxybenzoate (I.S.)

	System suitability requirement	result
Resolution (1, 2)	$\geq 20$	31.2

Column : YMC-Triart C18 (5  $\mu$ m, 12 nm)  
 150 X 4.6 mm I.D.  
 Eluent : 20 mM  $\text{KH}_2\text{PO}_4$ - $\text{K}_2\text{HPO}_4$  (pH 5.0)/methanol (45/55)  
 Flow rate : 1.2 mL/min (*adjust the flow rate so that the retention time of carvedilol is about 5 min*)  
 Temperature : 40°C  
 Detection : UV at 240 nm  
 Injection : 10  $\mu$ L (0.01, 0.029 mg/mL)  
 (The Japanese Pharmacopoeia 16th; Assay)