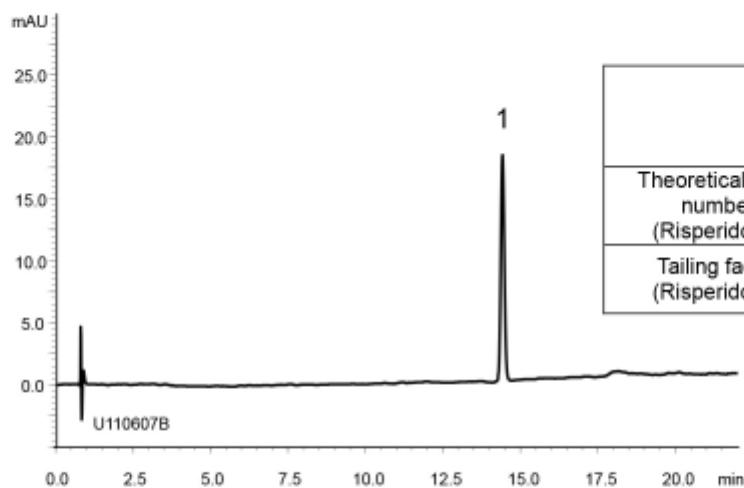
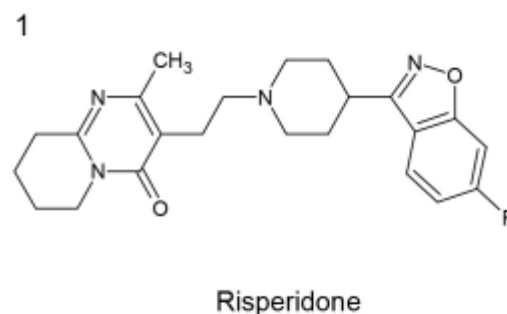
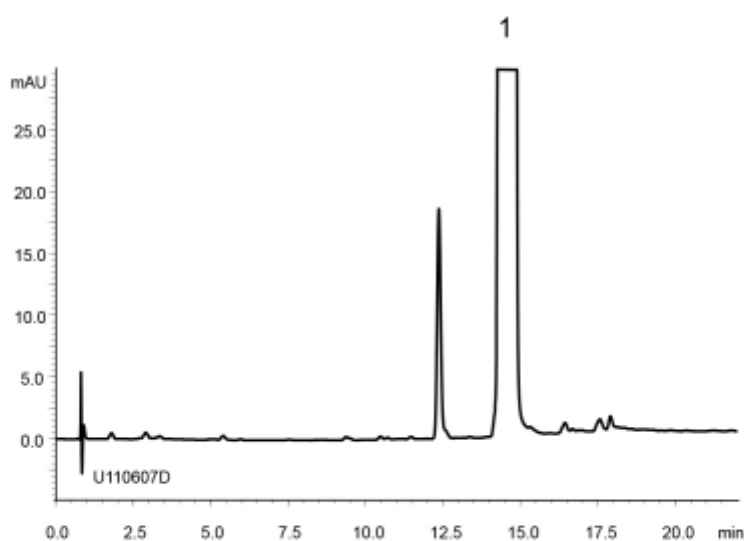


(A) Standard solution (0.02 mg/mL Risperidone)



	System suitability requirement	result
Theoretical plate number (Risperidone)	≥ 10000	71800
Tailing factor (Risperidone)	≤ 2.0	1.14

(B) Sample solution (10 mg/mL Risperidone)



Column : YMC-Triart C18 (3 μ m, 12 nm)
100 X 4.6 mm I.D.

Eluent : A) 65 mM CH₃COONH₄
B) methanol
30%B (0-2 min), 30-70%B (2-17 min), 70%B (17-22 min)

Flow rate : 1.5 mL/min

Temperature : 30°C

Detection : UV at 260 nm

Injection : 10 μ L

(The Japanese Pharmacopoeia 16th; Related substances)