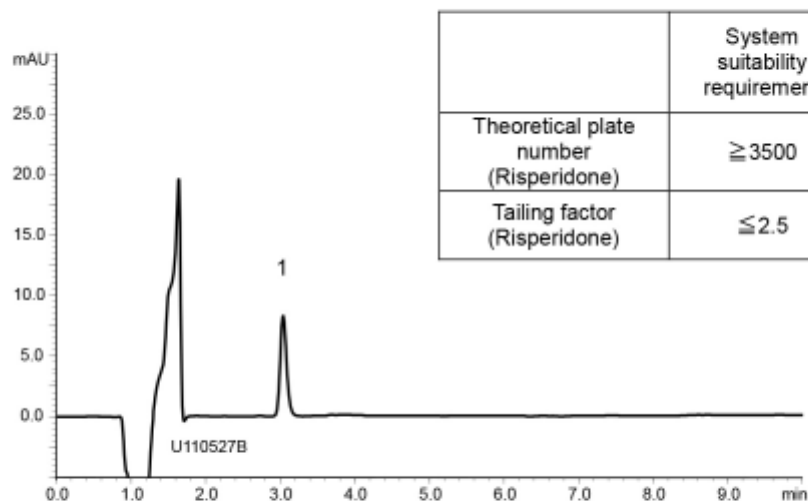
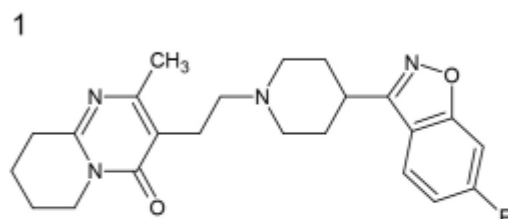


A) Risperidone Tablets standard solution  
(0.00056 mg/mL Risperidone)

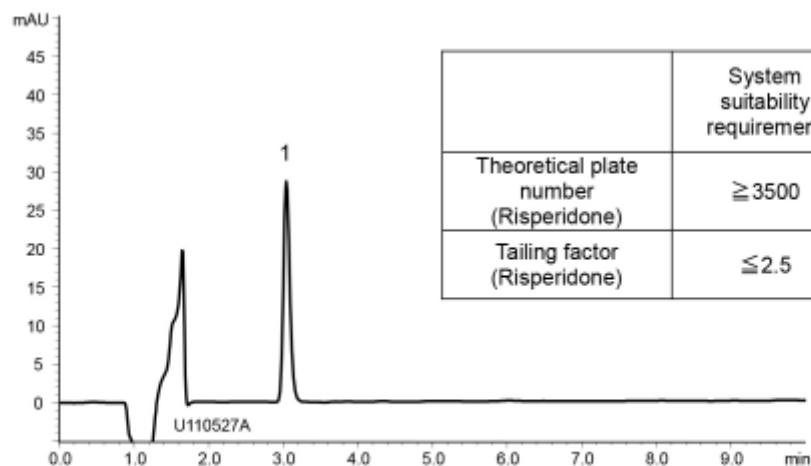


|  | System suitability requirement | result |
|--|--------------------------------|--------|
| Theoretical plate number (Risperidone) | $\geq 3500$                    | 5900   |
| Tailing factor (Risperidone)           | $\leq 2.5$                     | 1.26   |



Risperidone

B) Risperidone Fine Granules standard solution  
(0.00168 mg/mL Risperidone)



|  | System suitability requirement | result |
|--|--------------------------------|--------|
| Theoretical plate number (Risperidone) | $\geq 3500$                    | 5900   |
| Tailing factor (Risperidone)           | $\leq 2.5$                     | 1.28   |

Column : YMC-Triart C18 (5  $\mu$ m, 12 nm)  
150 X 4.6 mm I.D.

Eluent : acetonitrile/water/TFA (35/65/0.1) adjust pH 3.0 with 28% ammonia solution

Flow rate : 1.4 mL/min (adjust the flow rate so that the retention time of risperidone is about 3 min)

Temperature : 25°C

Detection : UV at 237 nm

Injection : 100  $\mu$ L

(The Japanese Pharmacopoeia 16th; Dissolution)