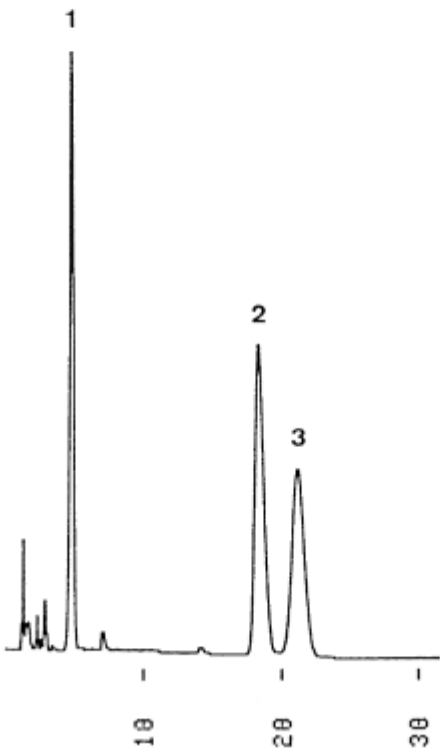


- 1.Erythromycin
- 2.Erythromycin ethylsuccinate
- 3.Erythromycin estolate



Column : J'sphere ODS-H80 (4 μ m, 8nm)
150 \times 4.6 mm I.D.
Eluent : acetonitrile/methanol/100mM (NH₄)₂HPO₄ (45/15/40)
Flow rate : 1.0 mL/min
Temperature : 45 °C
Detection : UV at 210 nm, 0.26 AUFS
Injection : 15 μ L (2.5 mg/mL)