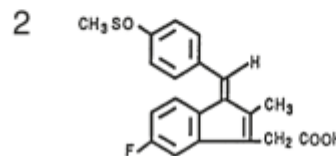
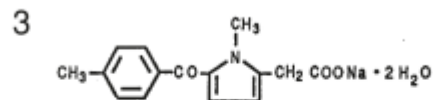


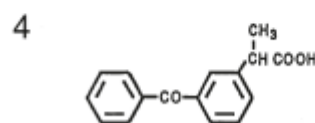
Piroxicam



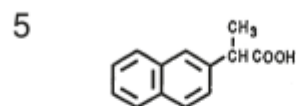
Sulindac



Tolmetin sodium dihydrate



Ketoprofen



Naproxen

Column	: J'sphere ODS-H80 (4 μ m, 8nm) 75 \times 4.6 mm I.D.
Eluent	: 2-propanol/water/acetic acid (25/75/1)
Flow rate	: 1.0 mL/min
Temperature	: 37 $^{\circ}$ C
Detection	: UV at 260 nm, 0.04 AUFS
Injection	: 5 μ L (20 μ g/mL)