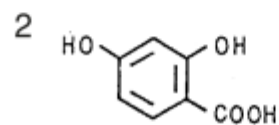
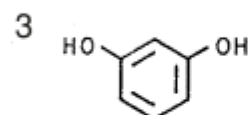


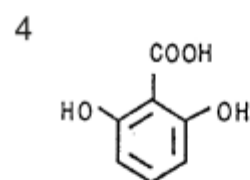
α -Resorcylic acid



β -Resorcylic acid



Resorcinol



γ -Resorcylic acid

Column	: YMC-Pack Ph (5 μ m, 12nm) 150 \times 4.6 mm I.D.
Eluent	: methanol/100mM KH ₂ PO ₄ (10/90)
Flow rate	: 0.8 mL/min
Temperature	: 37 $^{\circ}$ C
Detection	: UV at 285 nm, 0.16 AUFS
Injection	: 10 μ L (0.05~0.4 mg/mL)