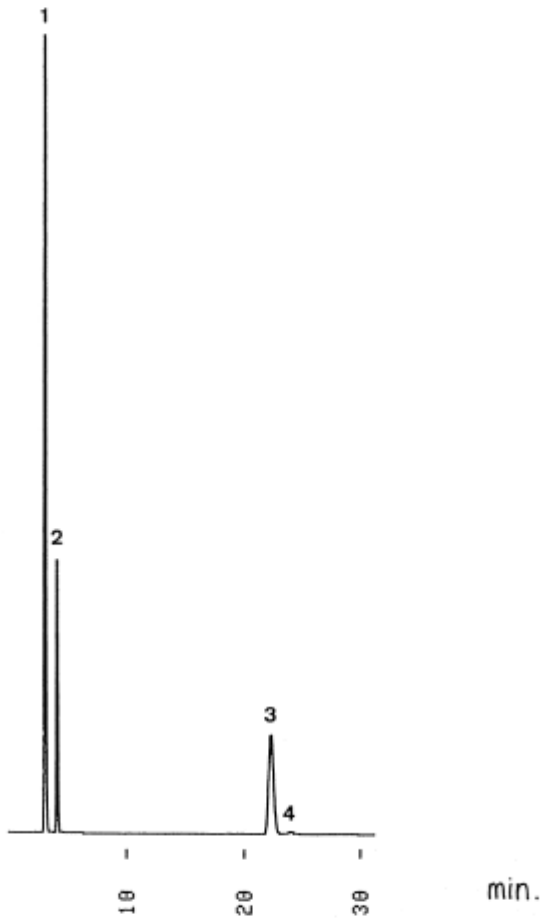


- 1.Acetaminophen
- 2.Caffeine
- 3.Ethenzamide
- 4.Bromovalerylurea



Column : YMC-Pack ODS-A (5 μ m, 12nm)
150 \times 4.6 mm I.D.
Eluent : acetonitrile/0.1% phosphoric acid (3/17)
Flow rate : 1.0 mL/min
Temperature : 30 $^{\circ}$ C
Detection : UV at 254 nm, 0.16 AUFS
Injection : 5 μ L