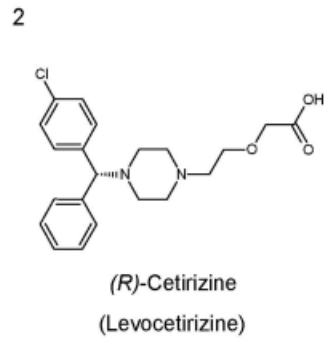
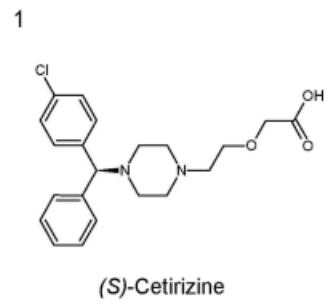
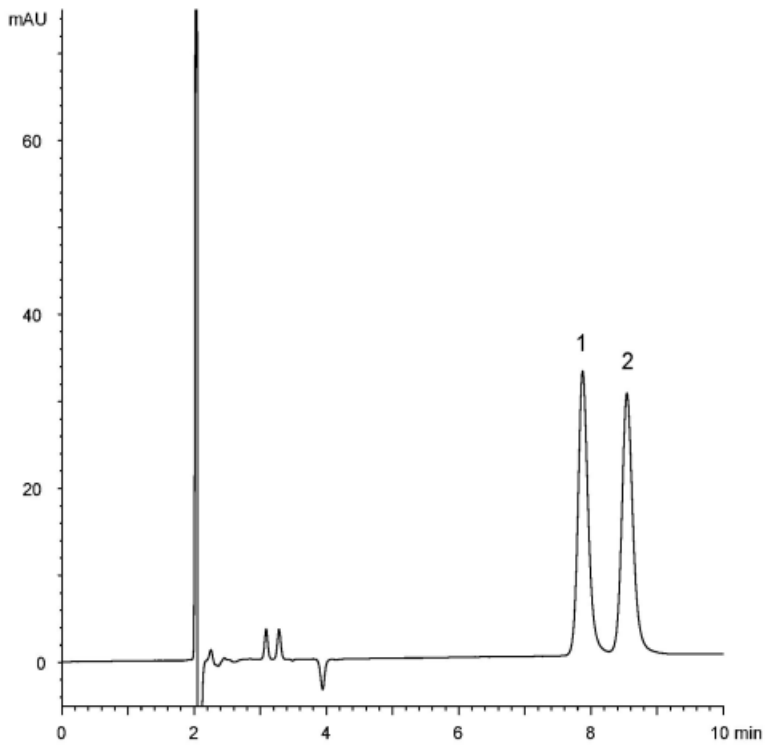


α	1.1
R_s	2.4



Column : CHIRAL ART Cellulose-SB (3 μ m)
150 X 4.6 mm I.D.

Eluent : acetonitrile/formic acid/diethylamine (100/0.1/0.1)

Flow rate : 1.0 mL/min

Temperature : 25°C

Detection : UV at 230 nm

Injection : 2 μ L (200 μ g/mL)