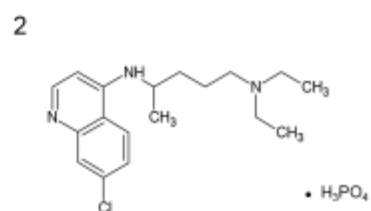


Hydroxychloroquine sulfate



Chloroquine phosphate

Column : YMC-Triart C18 (1.9  $\mu$ m, 12 nm)  
 50 X 2.0 mm I.D.  
 Eluent : 20 mM HCOOH-HCOONH<sub>4</sub> (pH 4.3)/acetonitrile (90/10)  
 Flow rate : 1.0 mL/min  
 Temperature : 25°C  
 Detection : UV at 254 nm  
 Injection : 2  $\mu$ L (10  $\mu$ g/mL)  
 Pressure : 69.0 MPa (10,000 psi)