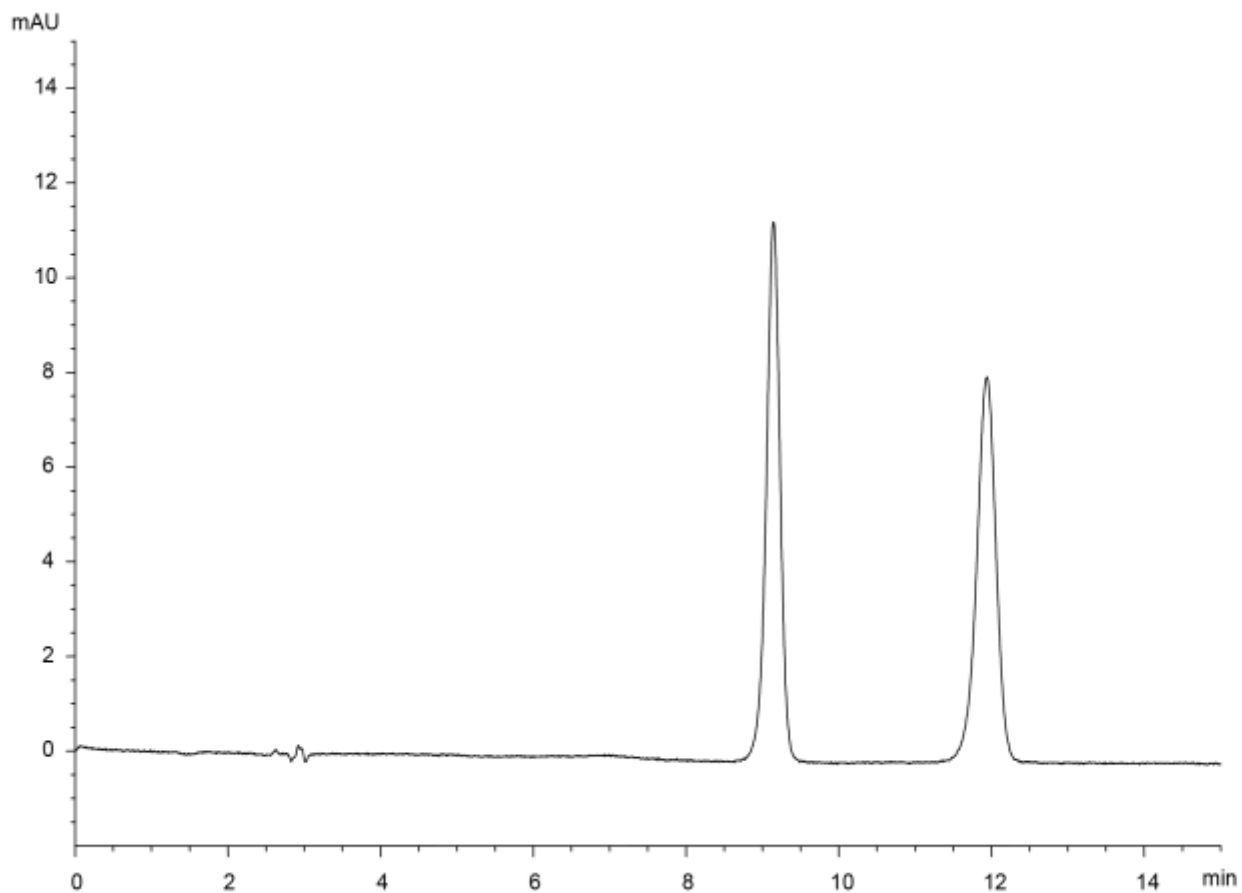


α	1.5
Rs	7.3



Column : YMC CHIRAL Cellulose-SB (5 μ m)
 250 X 4.6 mm I.D.
 Eluent : acetonitrile/20 mM phosphoric acid (50/50)
 Flow rate : 1.0 mL/min
 Temperature : 25°C
 Detection : UV at 254 nm
 Injection : 2 μ L (200 μ g/mL)