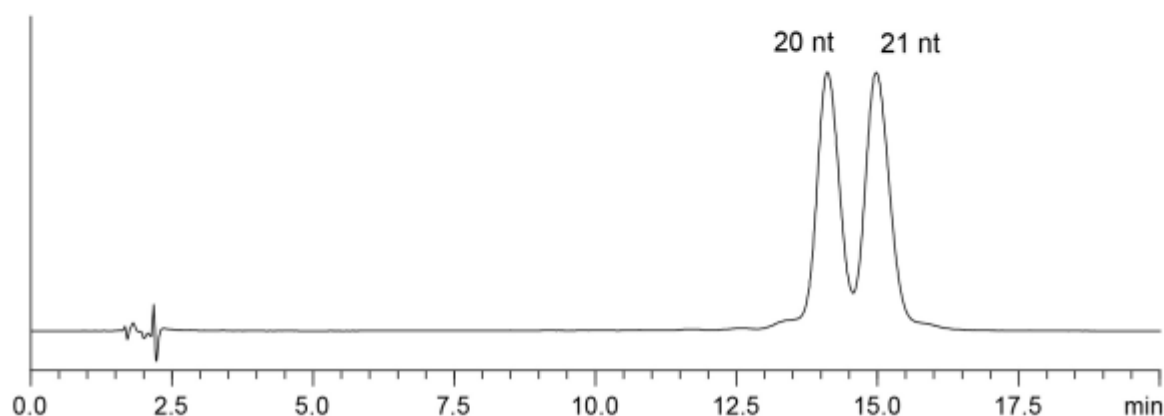


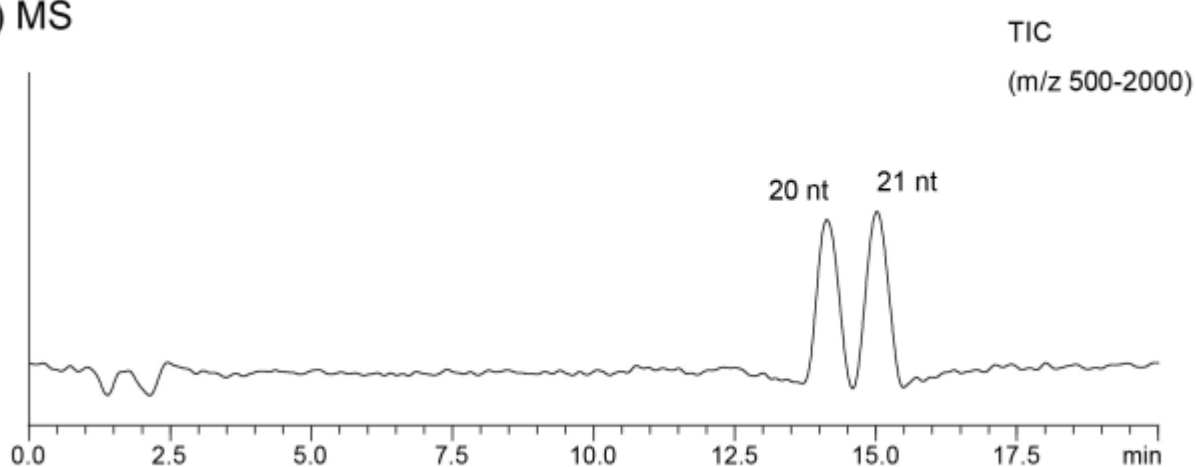
5'-GU ACG CGG AAU ACU UCG AdTdT-3' (20 nt)

5'- CGU ACG CGG AAU ACU UCG AdTdT-3' (21 nt)

## (A) UV



## (B) MS



Courtesy of M.Yamada, SHIMADZU CORPORATION

Column	: YMC-Triart C18 (3 $\mu$ m, 12 nm) 150 X 2.0 mmI.D.
Eluent	: A) 5 mM di-n-butylamine-acetic acid (pH 7.5) B) 5 mM di-n-butylamine-acetic acid (pH 7.5)/acetonitrile (50/50) 55-65%B (0-20 min)
Flow rate	: 0.2 mL/min
Detection	: (A) UV at 260 nm (B) ESI-negative mode
Instrument	: LC) Shimadzu Prominence MS) Shimadzu LCMS-IT-TOF