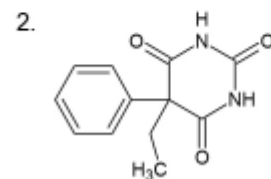
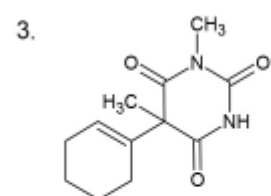


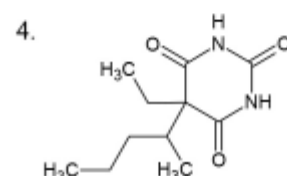
Barbital



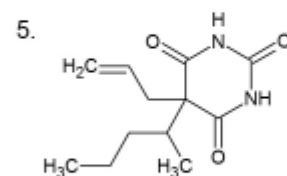
Phenobarbital



Hexobarbital

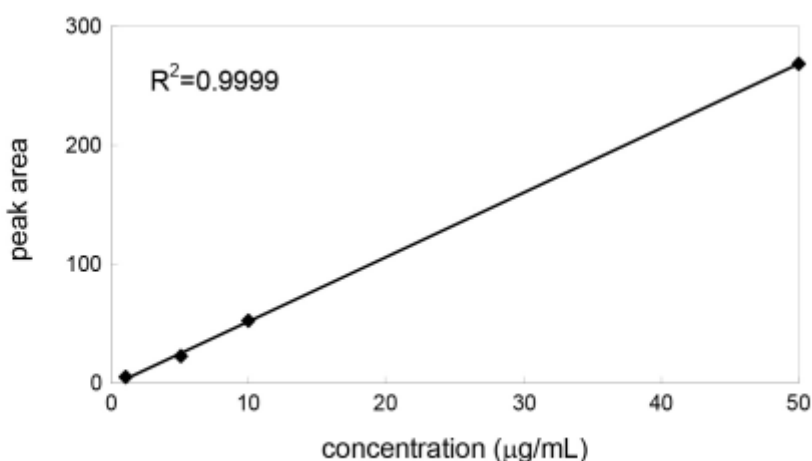


Pentobarbital



Secobarbital

Calibration curve of barbital



|             |   |
|-------------|---|
| Column      | : YMC-Triart C18 (5 µm, 12 nm)<br>50 X 2.0 mmI.D.   |
| Eluent      | : A) 20 mM HCOONH <sub>4</sub> -NH <sub>3</sub> (pH 9.5)<br>B) methanol<br>0-90%B (0-7 min) |
| Flow rate   | : 0.2 mL/min  |
| Temperature | : 25°C  |
| Detection   | : UV at 240 nm  |
| Injection   | : 1 µL (10 µg/mL)   |