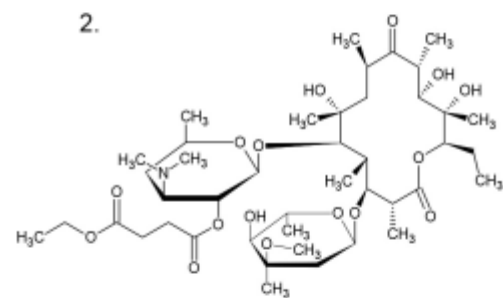
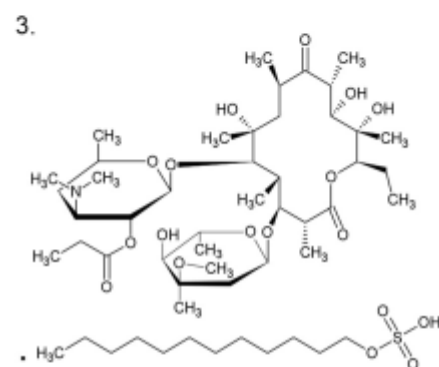


Erythromycin



Erythromycin ethylsuccinate



Erythromycin estolate

Column	: YMC-Triart C18 (3 μ m, 12 nm) 50 X 2.0 mmI.D.
Eluent	: 20 mM KH_2PO_4 - K_2HPO_4 (pH 7.9)/acetonitrile/methanol (40/45/15)
Flow rate	: 0.2 mL/min
Temperature	: 70°C
Detection	: UV at 210 nm
Injection	: 1 μ L (2 mg/mL)