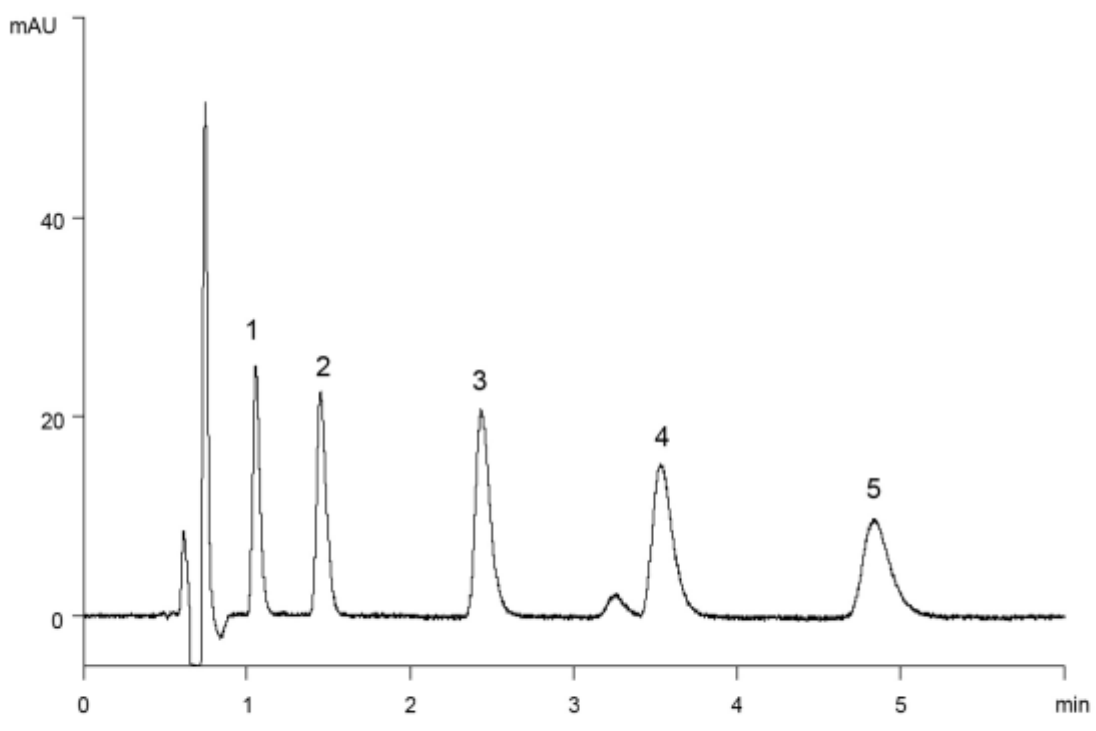


1. Scopolamine
2. Atropine
3. Cinchonine
4. Quinine
5. Dihydroquinine



Column : YMC-Triart C18 (5  $\mu$ m, 12 nm)  
50 X 2.0 mmI.D.  
Eluent : 20 mM CH<sub>3</sub>COOH-CH<sub>3</sub>COONH<sub>4</sub> (pH 4.9)/acetonitrile (80/20)  
Flow rate : 0.2 mL/min  
Temperature : 40°C  
Detection : UV at 220 nm  
Injection : 1  $\mu$ L (0.02-0.1 mg/mL)