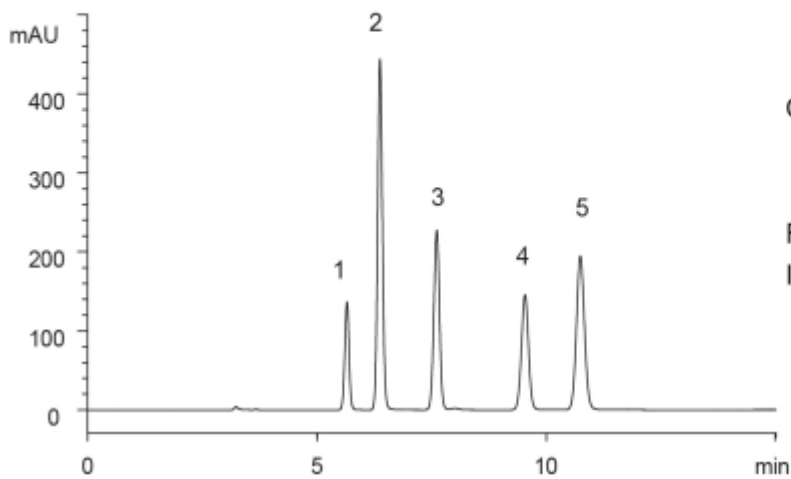
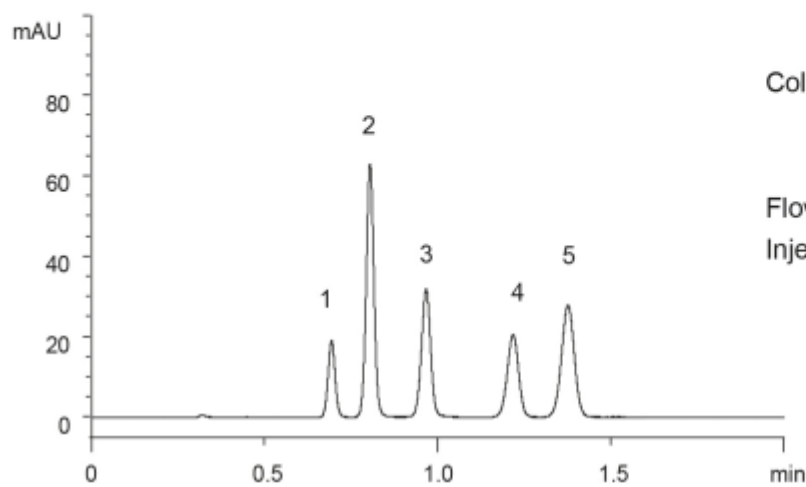


## Conventional LC method

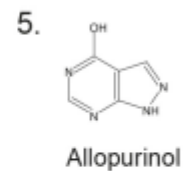
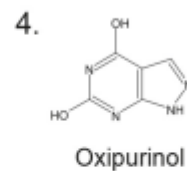
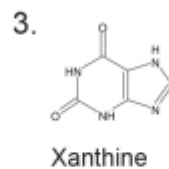
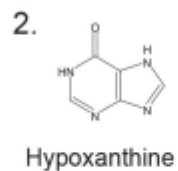
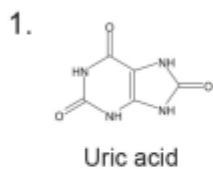


Column : Hydrosphere C18  
(5  $\mu$ m, 12nm)  
150 mm  $\times$  4.6 mm I.D.  
Flow rate : 1.0 mL/min  
Injection : 7.5  $\mu$ L

## Ultra-fast LC method



Column : YMC-UltraHT Hydrosphere C18  
(2  $\mu$ m, 12nm)  
50 mm  $\times$  2.0 mm I.D.  
Flow rate : 0.6 mL/min  
Injection : 0.5  $\mu$ L



Eluent  $\square$  : 10 mM CH<sub>3</sub>COOH-CH<sub>3</sub>COONH<sub>4</sub> (pH 4.5)

Temperature  $\square$  : 37  $^{\circ}$ C

Detection  $\square$  : UV at 254 nm

Injection  $\square$  : 0.1 mg/mL