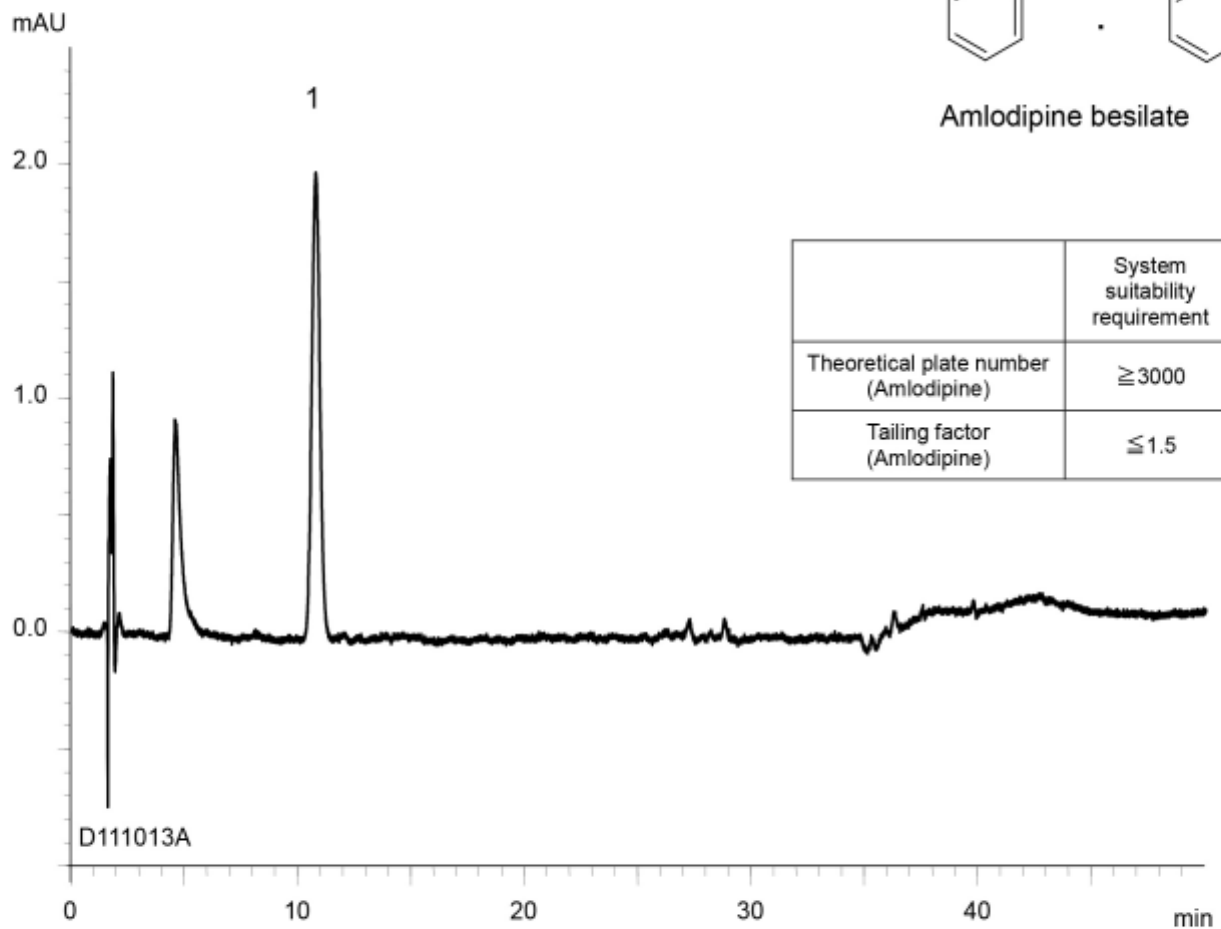


Amlodipine besilate



	System suitability requirement	result
Theoretical plate number (Amlodipine)	≥ 3000	4300
Tailing factor (Amlodipine)	≤ 1.5	1.09

Column : YMC-Triart C18 (5 μ m, 12 nm)
 150 X 4.6 mm I.D.
 Eluent : A) phosphate buffer (pH 6.0)* / methanol (50/50)
 B) phosphate buffer (pH 6.0)* / methanol (5/95)
 20%B (0-10 min), 20-100%B (10-35 min), 100%B (35-50 min)
**Dissolve 4.1 g of KH_2PO_4 in 1000 mL of water and adjust pH 6.0 with 30 mM Na_2HPO_4*
 Flow rate : 0.9 mL/min (adjust the flow rate so that the retention time of amlodipine is about 10 min)
 Temperature : 25°C
 Detection : UV at 237 nm
 Injection : 30 μ L (0.0007 mg/mL)
 (The draft for the Japanese Pharmacopoeia; Related substances)