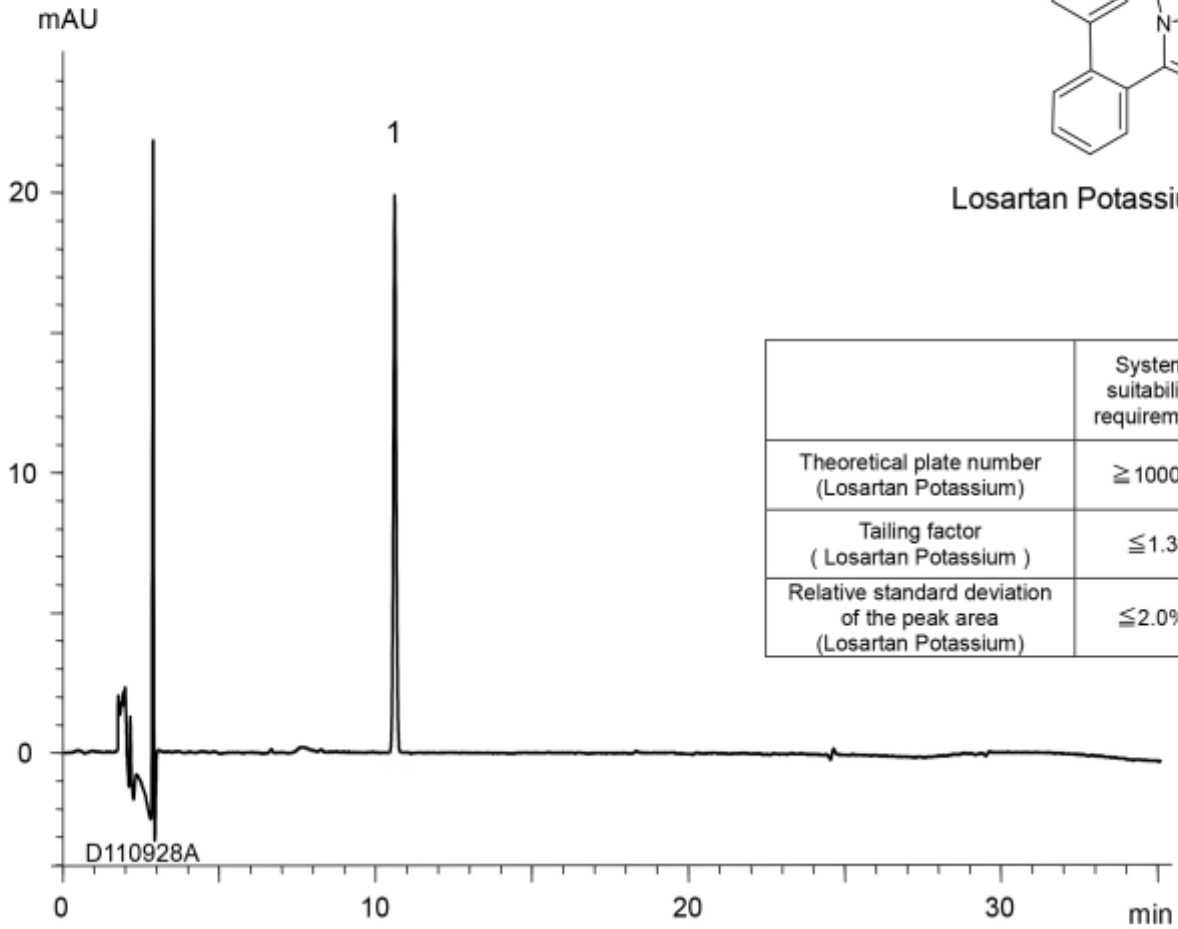


Losartan Potassium



	System suitability requirement	result
Theoretical plate number (Losartan Potassium)	≥ 10000	66800
Tailing factor (Losartan Potassium)	≤ 1.3	1.07
Relative standard deviation of the peak area (Losartan Potassium)	$\leq 2.0\%$	0.48%

Column : YMC-Triart C18 (5 μm , 12 nm)
 250 X 4.0 mm I.D.
 Eluent : A) 0.1% phosphoric acid
 B) acetonitrile
 25-90%B (0-25 min), 90%B (25-35 min)
 Flow rate : 1.0 mL/min
 Temperature : 25°C
 Detection : UV at 220 nm
 Injection : 10 μL (0.003 mg/mL)
 (The Japanese Pharmacopoeia 16th; Related substances)