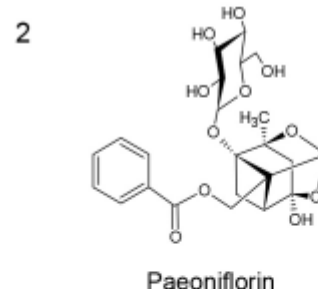
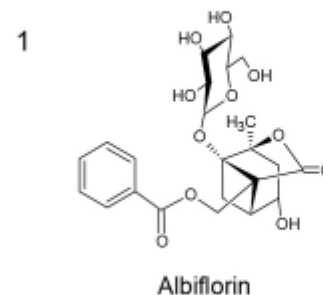
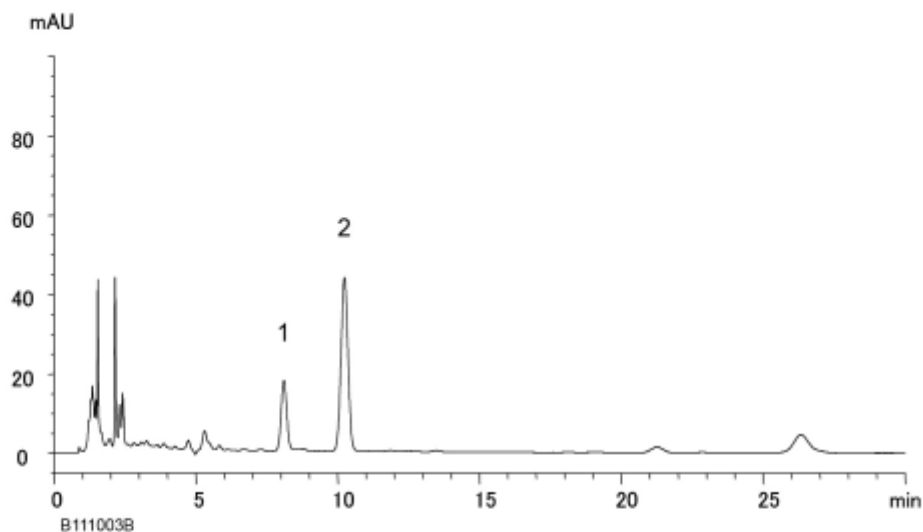
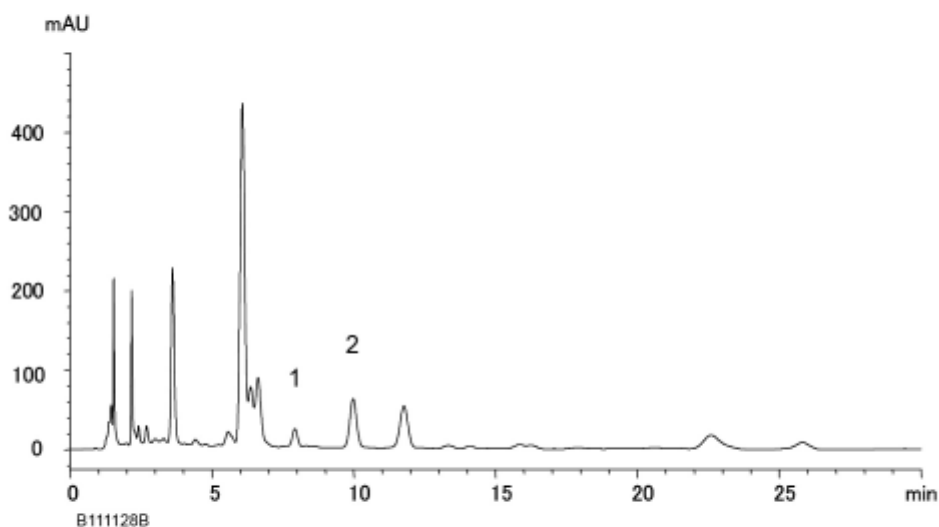


A) Toki-shakuyaku-san extract granules



B) Kakkonto extract granules



- | | |
|-------------|--|
| Column | : YMC-Triart C18 (5 μ m, 12 nm)
150 X 4.6 mm I.D. |
| Eluent | : water/acetonitrile/phosphoric acid (850/150/1) |
| Flow rate | : 1.1 mL/min (<i>adjust the flow rate so that the retention time of paeoniflorin is about 10 min</i>) |
| Temperature | : 20°C |
| Detection | : UV at 232 nm |
| Injection | : 10 μ L |
| Sample | : A) 50% methanol extract of a commercially available Toki-shakuyaku-san extract granules (10 mg/mL)
B) 50% methanol extract of a commercially available Kakkonto extract granules (10 mg/mL) |

[The Japanese Pharmacopoeia 16th; "Syakuyaku (Peony Root)", Assay]