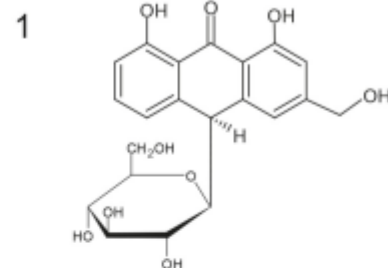
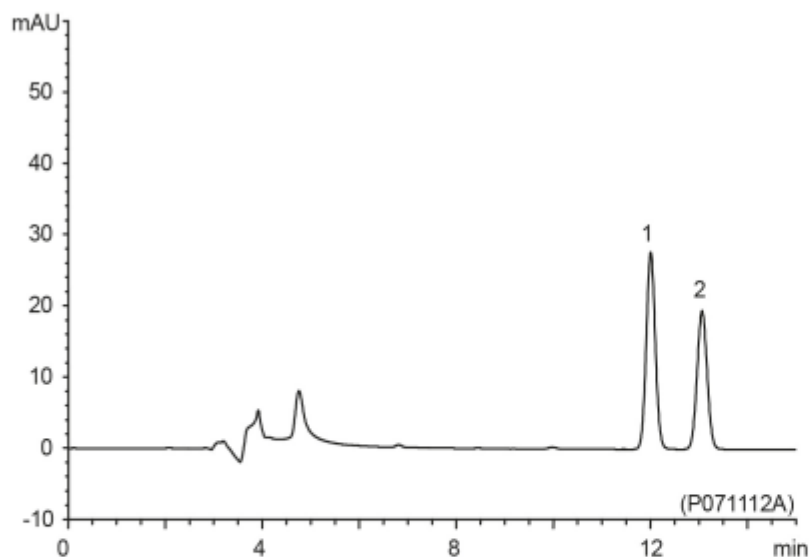
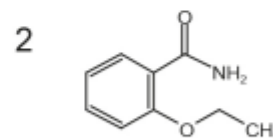


### A) System suitability solution

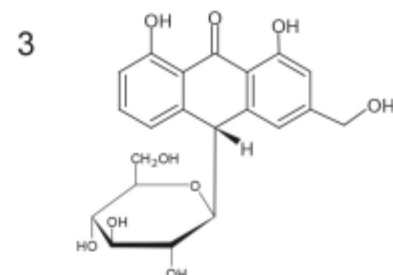
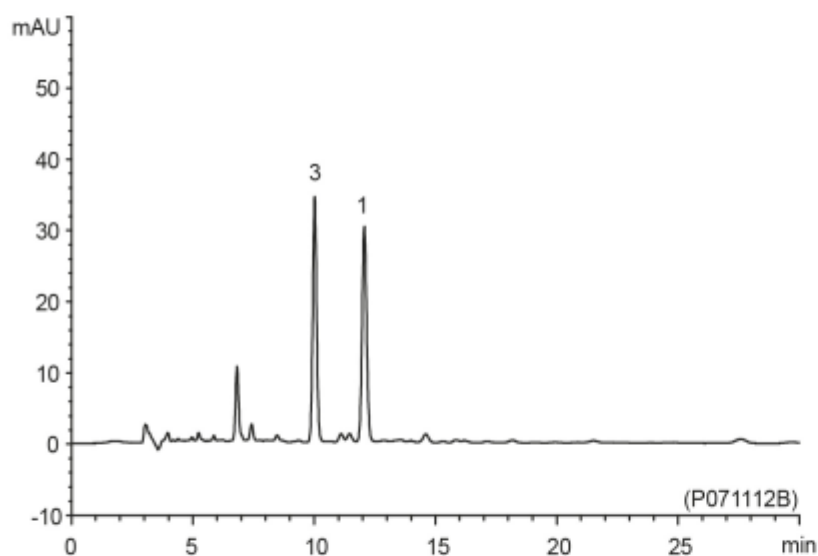


Barbaloin (Aloin A)



Ethenzamide

### B) Sample solution (Powdered aloe)



Isobarbaloin (Aloin B)

Column	: YMC-Pack <i>Pro</i> C18 (5 $\mu$ m, 12 nm) 150 X 6.0 mm I.D.
Eluent	: acetonitrile / water / acetic acid (26/74/1)
Flow rate	: 0.9 mL/min
Temperature	: 30°C
Detection	: A) UV at 300 nm B) UV at 360 nm
Injection	: A) 5 $\mu$ L (50 $\mu$ g/mL) B) 5 $\mu$ L (1 mg/mL)