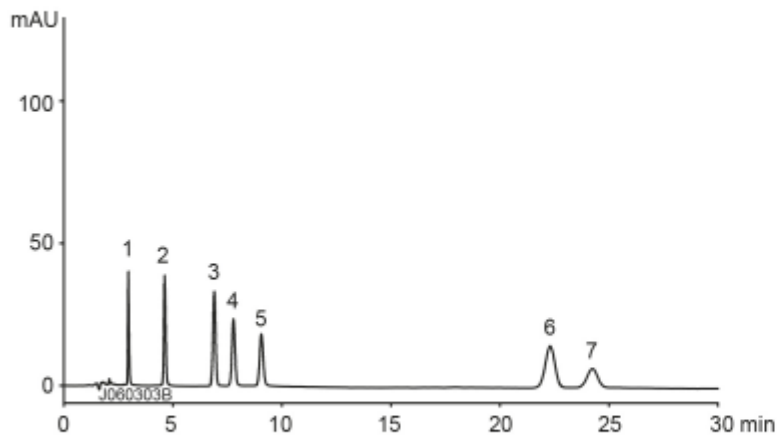
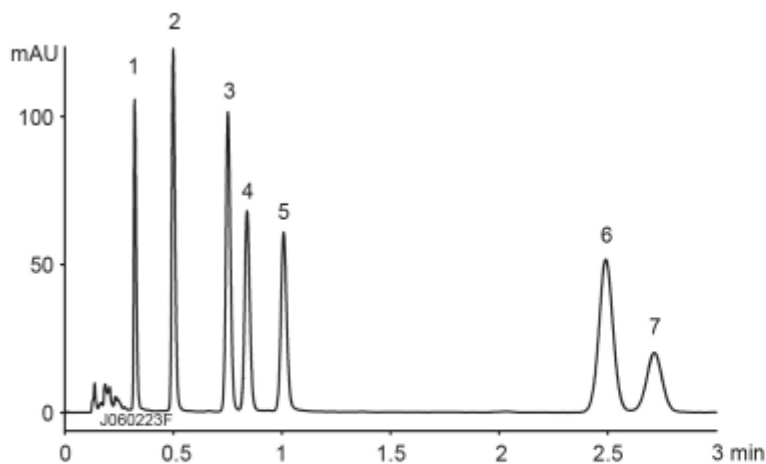


## Conventional LC method

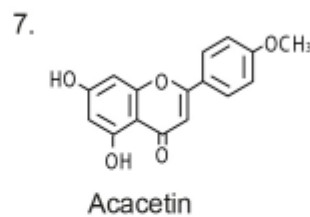
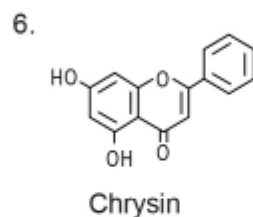
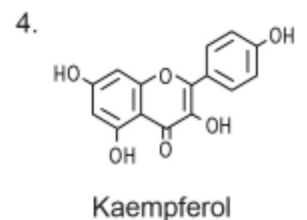
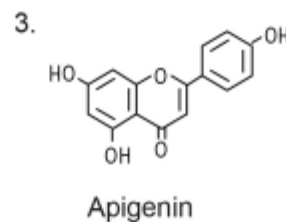
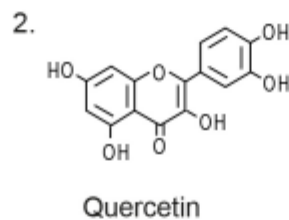


Column : YMC-Pack *Pro* C18 (5  $\mu$ m, 12 nm)  
150 X 4.6 mm I.D.  
Flow rate : 1.0 mL/min  
Injection : 5  $\mu$ L

## Ultra-fast LC method



Column : YMC-UltraHT *Pro* C18 (2  $\mu$ m, 12 nm)  
50 X 2.0 mm I.D.  
Flow rate : 0.6 mL/min  
Injection : 1  $\mu$ L



Eluent : acetonitrile / water / formic acid (35/65/0.1)  
Temperature : 40°C  
Detection : UV at 260 nm  
Sample : 0.05 mg/mL