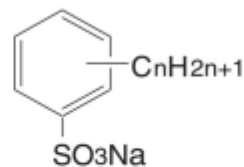
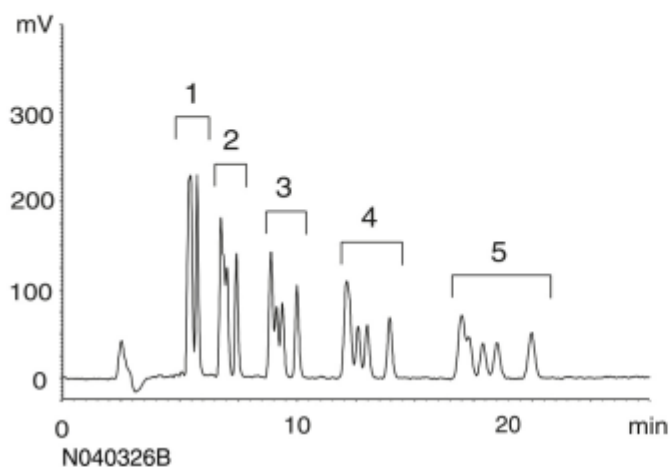
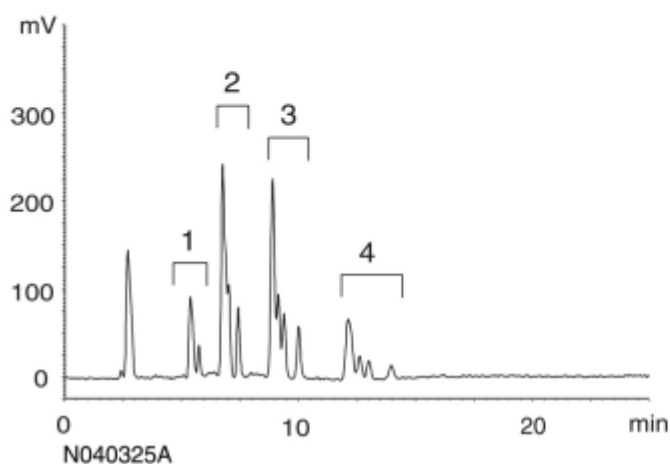


A) Standard



1. Sodium decylbenzenesulfonate (n=10)
2. Sodium undecylbenzenesulfonate (n=11)
3. Sodium dodecylbenzenesulfonate (n=12)
4. Sodium tridecylbenzenesulfonate (n=13)
5. Sodium tetradecylbenzenesulfonate (n=14)

B) Laundry detergent



Column	: YMC-Pack Pro C18 (5 μ m, 12nm) 250 \times 4.6 mm I.D.
Eluent	: acetonitrile/water (65/35) containing 0.1M NaClO ₄
Flow rate	: 1.0 mL/min
Temperature	: 40 $^{\circ}$ C
Detection	: FLS at Ex 221 nm, Em 284 nm
Injection	: 20 μ L
Sample	: A) 2.0 μ g/mL B) 25 μ g/mL (water solution of laundry detergent powder)