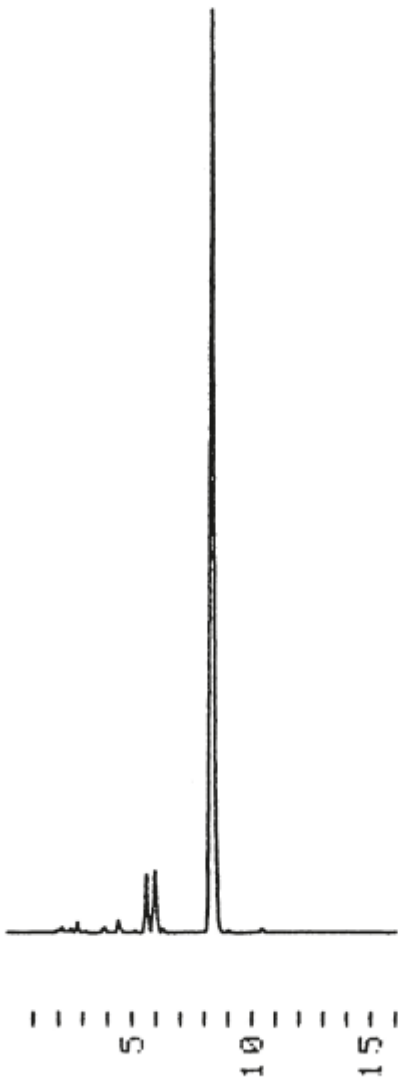


1. Annatto pigment



Column	: YMC-Pack ODS-AM (5 μ m, 12nm) 150 \times 4.6 mm I.D.
Eluent	: acetonitrile/water/acetic acid (65/34/1)
Flow rate	: 1.0 mL/min
Temperature	: 30 $^{\circ}$ C
Detection	: VIS at 454 nm, 0.16 AUFS
Injection	: 5 μ L (2 mg/mL)
Sample	: Annatto pigment