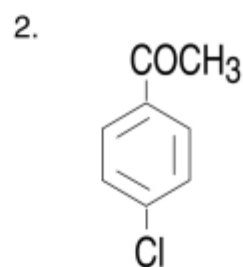
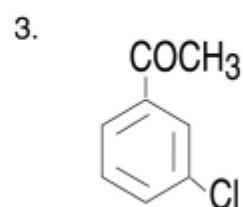


o-Chloroacetophenone



p-Chloroacetophenone



m-Chloroacetophenone

Column	: YMC-Pack Pro C18 RS (5 μ m, 8nm) 150 \times 4.6 mm I.D.
Eluent	: acetonitrile/water (40/60)
Flow rate	: 1.0 mL/min
Temperature	: 30 $^{\circ}$ C
Detection	: UV at 254 nm, 0.32 AUFS
Injection	: 8.0 μ L (0.05~0.1 μ L/mL)