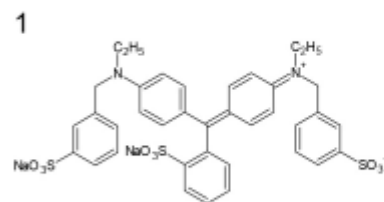
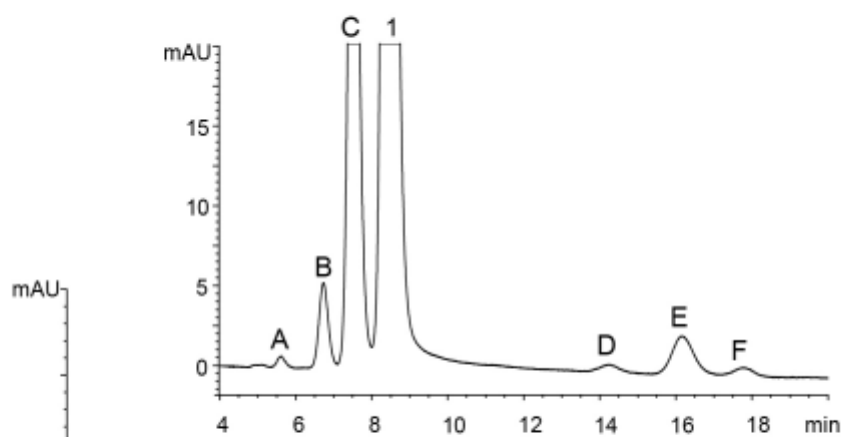


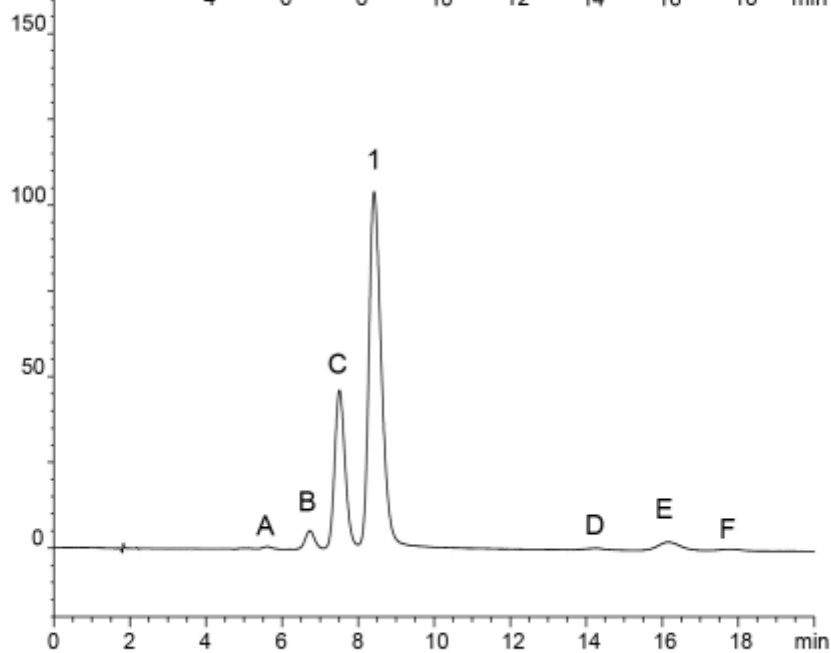
## En larged chromatogram



Brilliant blue FCF

A – E

: Impurities in Brilliant blue FCF reagent



Column : YMC-Triart Phenyl (5  $\mu$ m, 12 nm)  
150 X 3.0 mmI.D.  
Eluent : 0.1% phosphoric acid/methanol (55/45)  
Flow rate : 0.425 mL/min  
Temperature : 40°C  
Detection : UV at 630 nm  
Injection : 2.0  $\mu$ L (0.1 mg/mL)