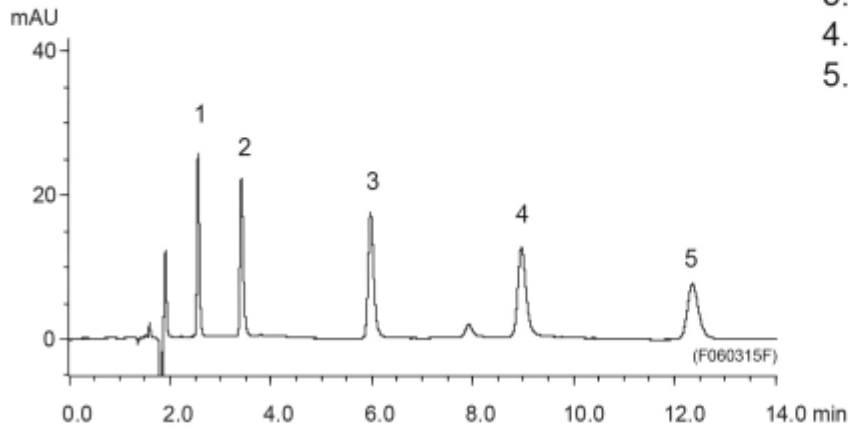


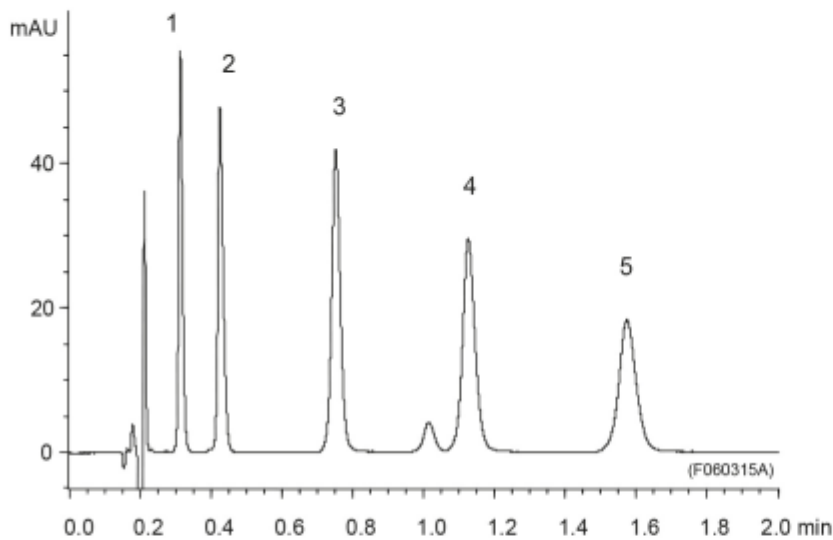
Conventional LC method



1. Scopolamine
2. Atropine
3. Cinchonine
4. Quinine
5. Dihydroquinine

Column : YMC-Pack Pro C18
(5 μ m, 12 nm)
150 mm \times 4.6 mm I.D.
Flow rate : 1.0 mL/min
Injection : 5 μ L

Ultra-fast LC method



Column : YMC-UltraHT Pro C18
(2 μ m, 12 nm)
50 mm \times 2.0 mm I.D.
Flow rate : 0.6 mL/min
Injection : 1 μ L

Eluent \square : 20 mM CH₃COOH-CH₃COONH₄ (pH 4.9) / acetonitrile (80/20)
Temperature \square : 40 $^{\circ}$ C
Detection \square : UV at 220 nm
Injection \square : 0.02-0.1 mg/mL