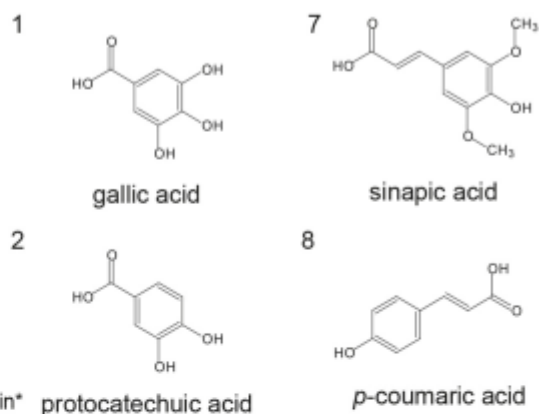
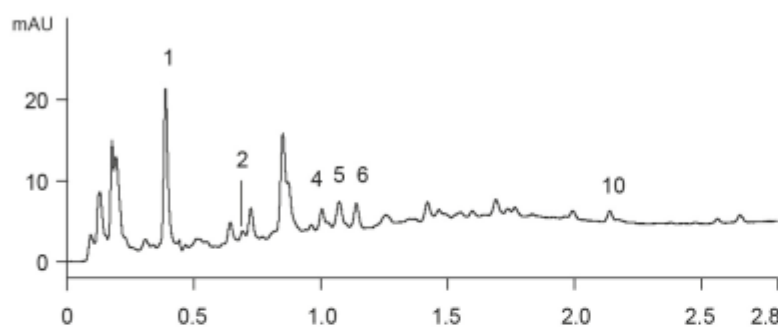
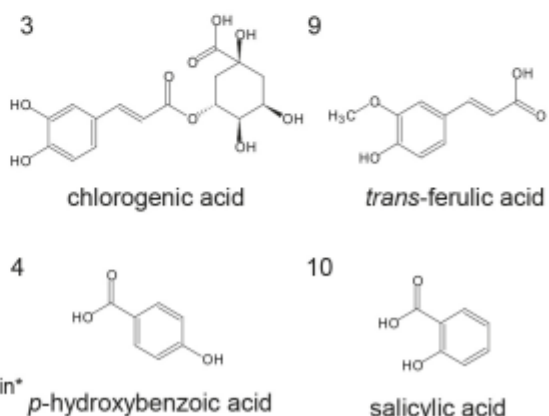
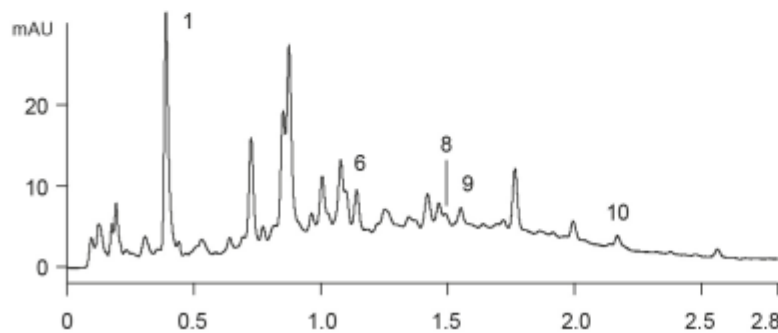


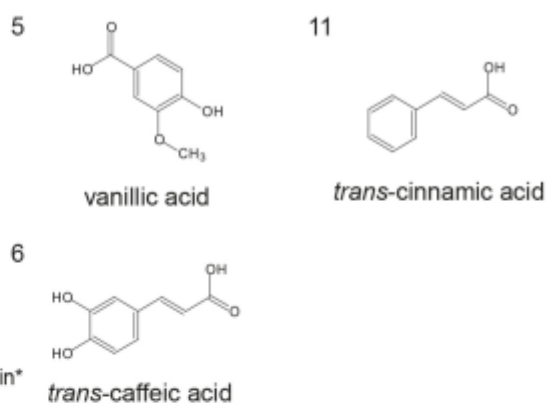
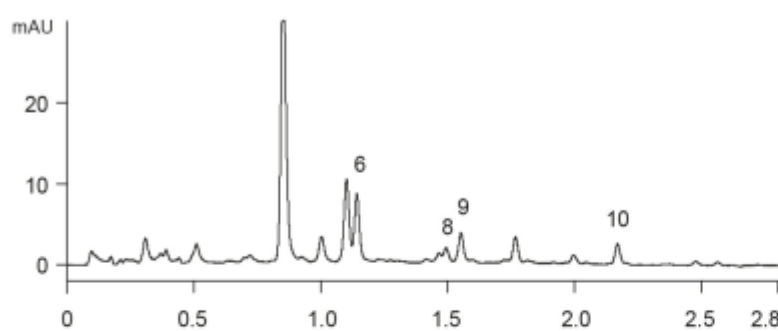
A) UV at 254 nm



B) UV at 280 nm



C) UV at 320 nm



- Column : YMC-UltraHT *Pro* C18 (2 μ m, 12 nm)
50 X 2.0 mm I.D.
- Eluent : A) water / HCOOH (200/0.4)
B) acetonitrile / methanol / THF / water / HCOOH (43.5/43.5/13/100/0.4)
20-100%B (0-2.8 min)
- Flow rate : 0.5 mL/min
- Temperature : 40 $^{\circ}$ C
- Detection : A) UV at 254 nm, B) UV at 280 nm, C) UV at 320 nm
- Injection : 2 μ L
- Samples : 5 times dilution of a red wine with water