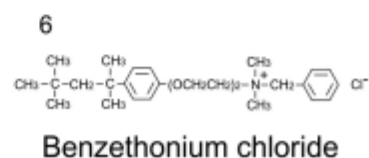
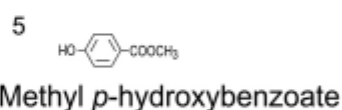
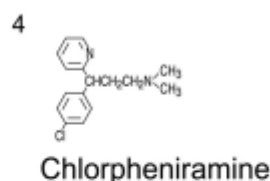
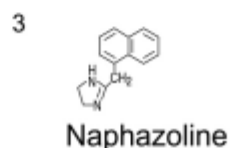
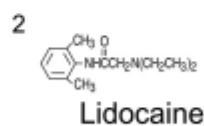
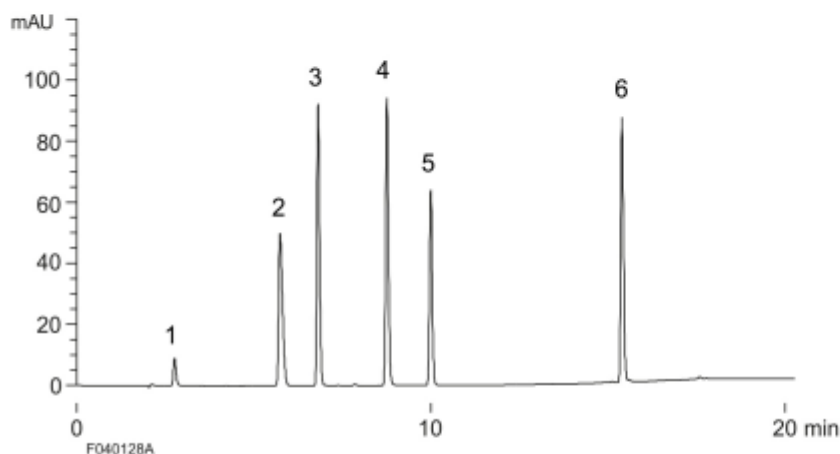
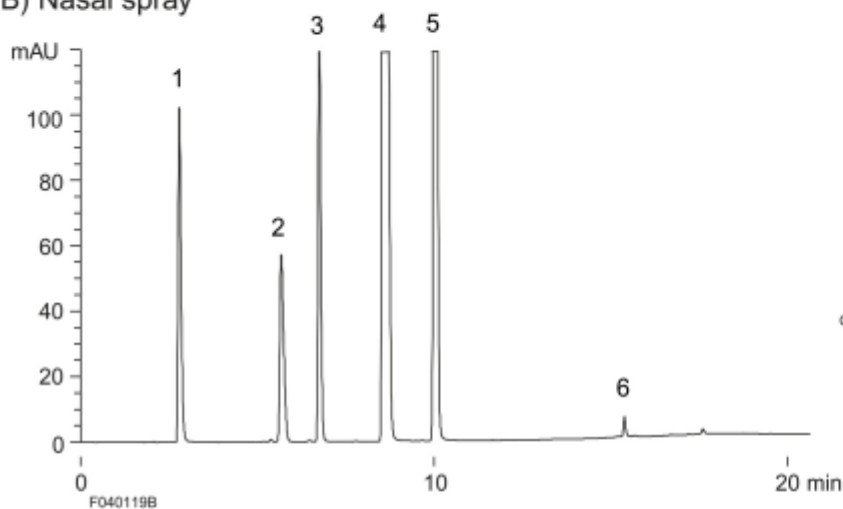


A) Standard



B) Nasal spray



Column : YMC-Pack Pro C18 (5 μ m, 12 nm)
 150 \times 4.6 mm I.D.

Eluent : A) 20 mM KH_2PO_4 - H_3PO_4 (pH 2.5)
 B) methanol
 20-90% B (0-15 min), 90% B (15-20 min)

Flow rate : 1.0 mL/min

Temperature : 37 $^\circ\text{C}$

Detection : UV at 260 nm

Injection : A) 5 μL (0.1 ~ 0.7 mg/mL)

B) 3 μL (2 times dilution of a commercially available nasal spray with water)