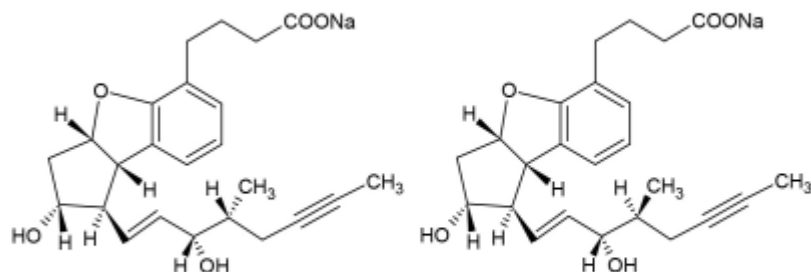
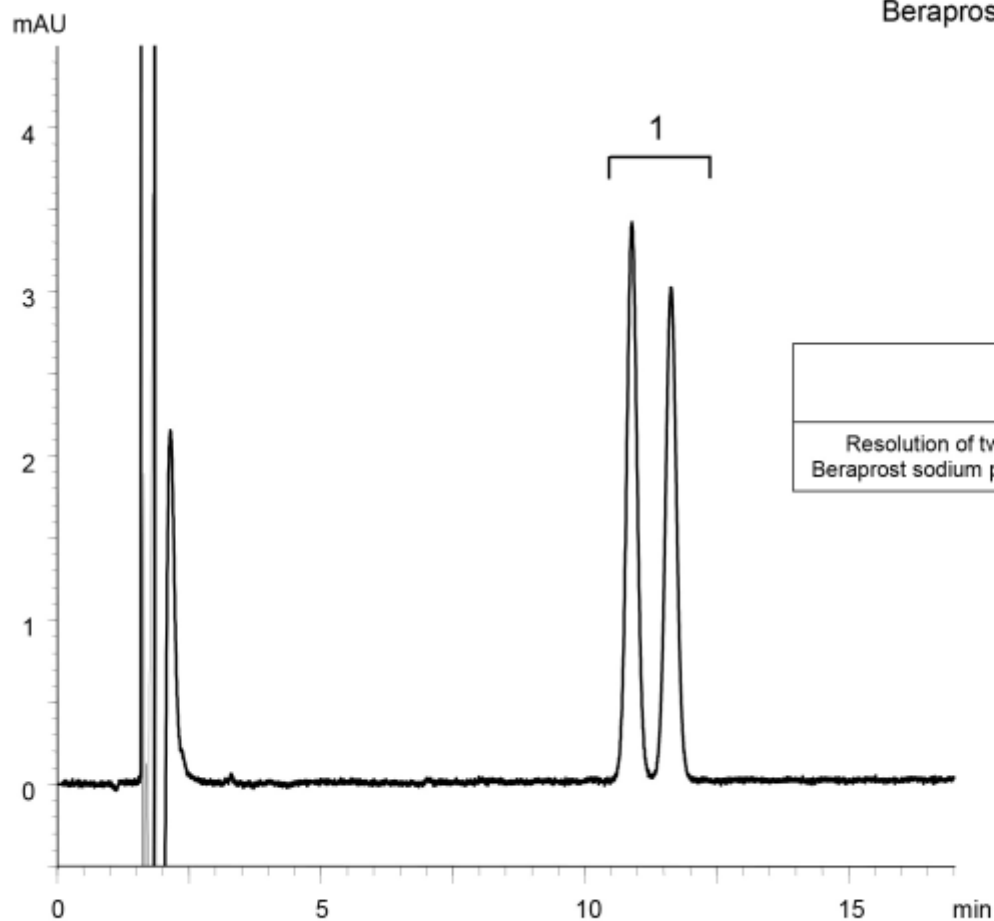


1



Beraprost sodium



	System suitability requirement	Result
Resolution of two Beraprost sodium peaks	≥ 1.2	1.9

Column : YMC-Pack Pro C18 (5 μ m, 12 nm)
150 X 4.6 mm I.D.

Eluent : methanol/water/acetic acid (65/35/0.1)

Flow rate : 1.0 mL/min (*adjust the flow rate so that the retention time of the first peak of beraprost is about 10 min*)

Temperature : 40°C

Detection : UV at 285 nm

Injection : 200 μ L (0.002 mg/mL)

(Modified conditions of The Japanese Pharmacopoeia 16th; Dissolution)