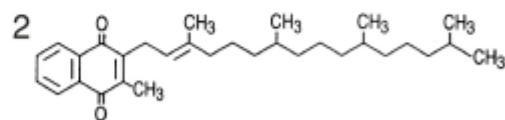
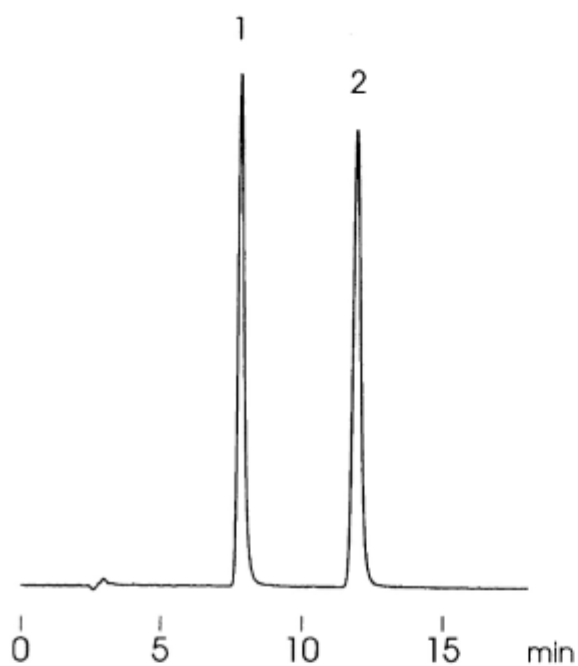


Menaquinone (Vitamin K2)



Phylloquinone (Vitamin K1)



Column	: YMC-Pack Pro C18 (5 μ m, 12nm) 150 \times 4.6 mm I.D.
Eluent	: methanol/ethanol (5/1)
Flow rate	: 0.8 mL/min
Temperature	: 40 $^{\circ}$ C
Detection	: FLS at Ex 320 nm, Em 430 nm reduction column (platinum black, 10 x 4.0 mm I.D.)
Injection	: 20 μ L (100 ng/mL)