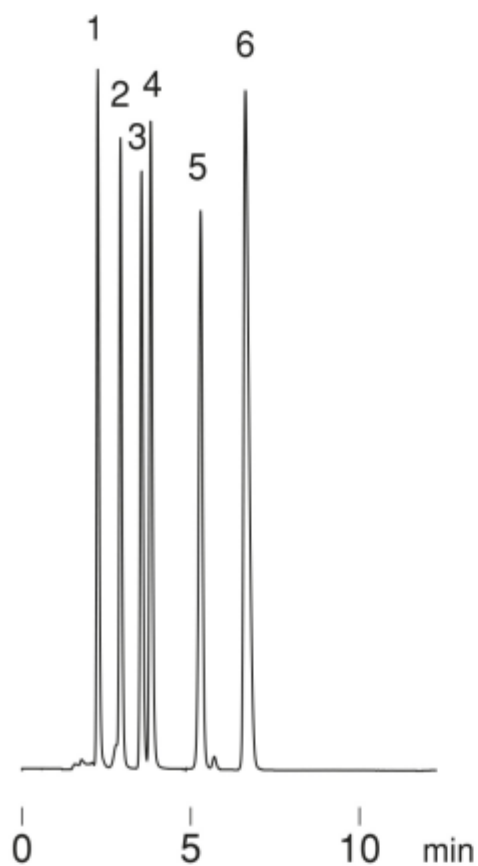


1. Tartaric acid
2. L-Malic acid
3. Lactic acid
4. Acetic acid
5. Citric acid
6. Succinic acid



Column	: Hydrosphere C18 (5 μ m, 12nm) 150 \times 4.6 mm I.D.
Eluent	: 20mM NaH ₂ PO ₄ - H ₃ PO ₄ (pH 2.8)
Flow rate	: 1.0 mL/min
Temperature	: 30 $^{\circ}$ C
Detection	: UV at 220 nm, 0.064 AUFS
Injection	: 10 μ L (0.25~2.0 mg/mL)